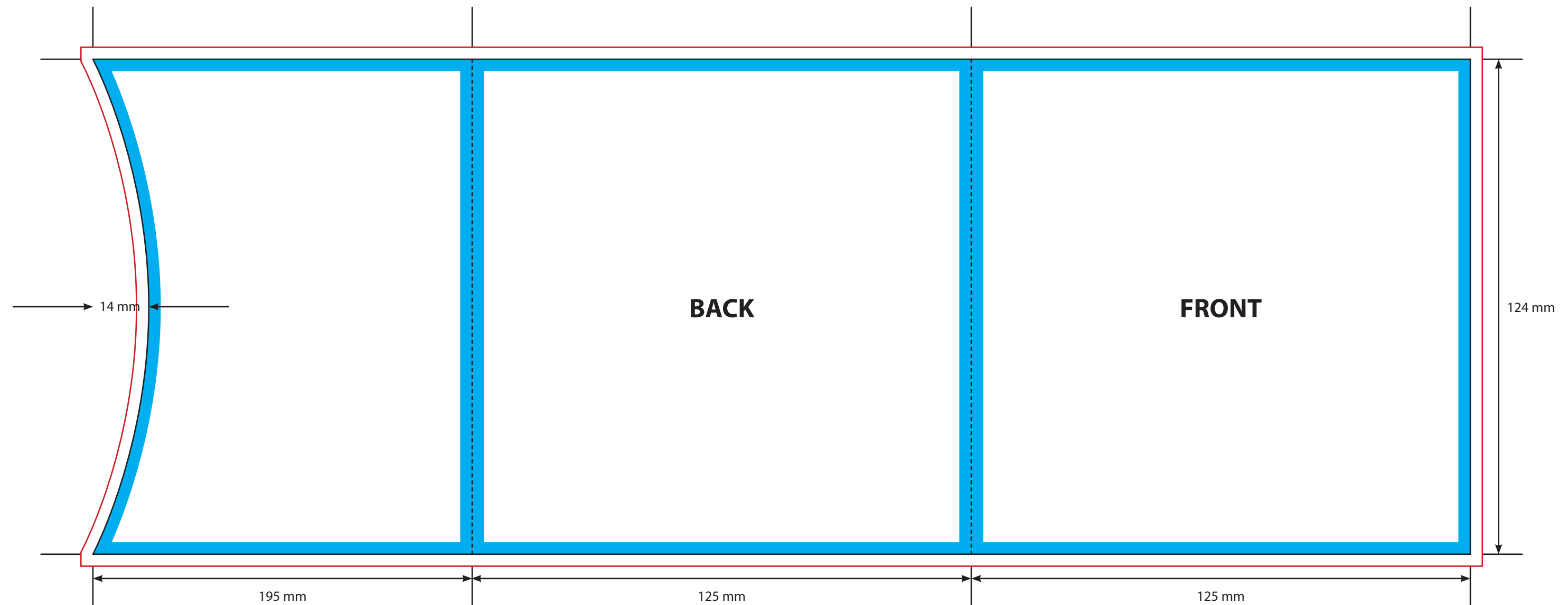








OUTER



**KEY**

-  Trim Line
-  Fold Line
-  3mm Safety Area - Important text and logos should not be in this area.
-  3mm Required Bleed Area - Background should extend to this line.

**AVAILABLE CARD STOCKS \***

- 215gsm White/White
- 270gsm White/White > Standard
- 280gsm White/Grey
- 300gsm White/Brown
- 350gsm White/White

**CARD FINISHES AVAILABLE**

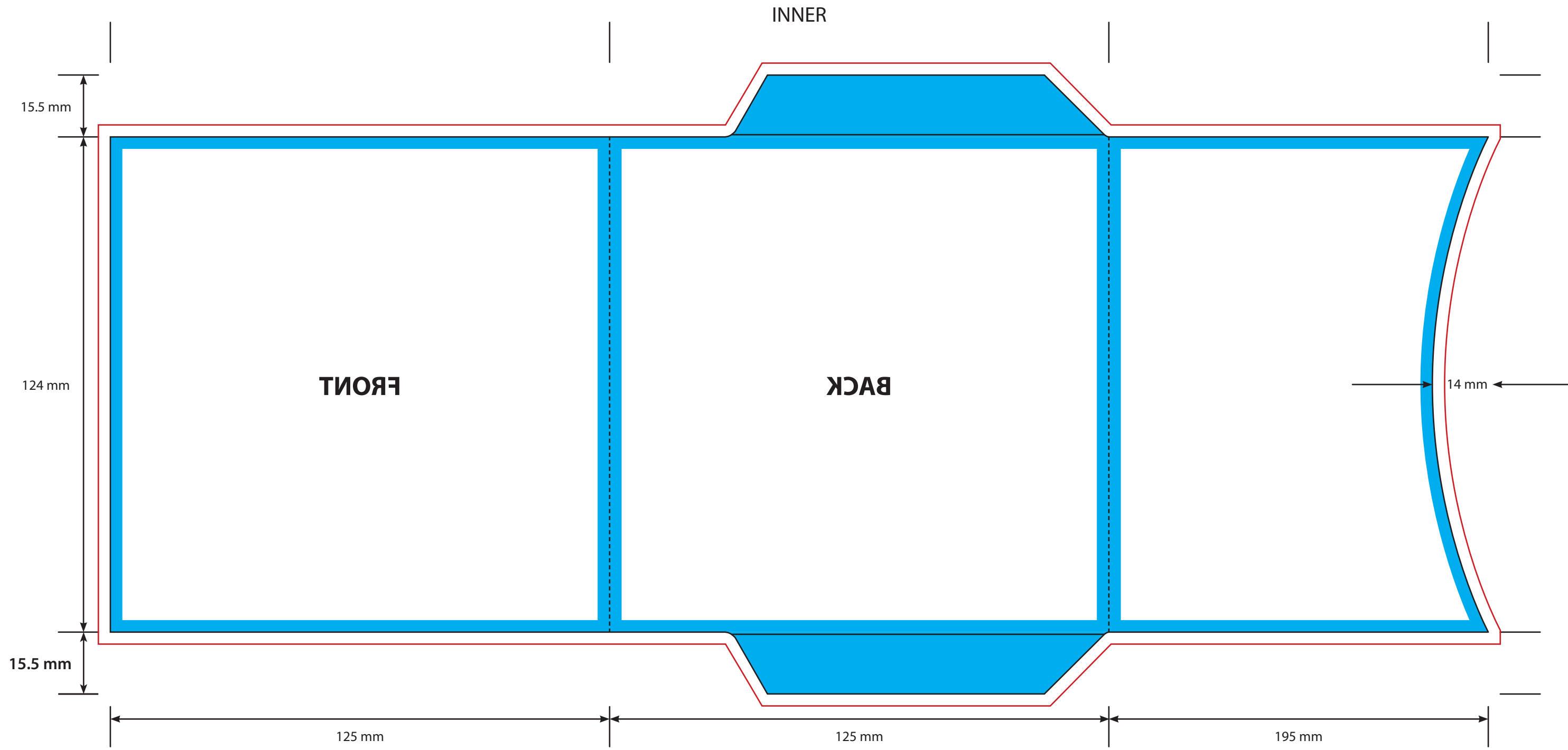
- Gloss Machine Varnish > Standard
- Matt Machine Varnish
- Reverse Board (Uncoated)
- Gloss Lamination
- Matt Lamination
- Anti-Scratch Matt Lamination
- Special Lamination (i.e. Holographic Lamination)

Please click [here](#) for useful information on the best way to set up and supply your artwork.





For any further questions please email our design team [here](#).

Please ask your account manager if you would like to change the stock and/or finish, as prices may vary.

\* Please note, not all card stocks are available on all templates. Please check with your sales contact.



**KEY**

	Trim Line
	Fold Line
	3mm Safety Area - Important text and logos should not be in this area.
	3mm Required Bleed Area - Background should extend to this line.

- AVAILABLE CARD STOCKS \***
- 215gsm White/White
  - 270gsm White/White > Standard
  - 280gsm White/Grey
  - 300gsm White/Brown
  - 350gsm White/White

- CARD FINISHES AVAILABLE**
- Gloss Machine Varnish > Standard
  - Matt Machine Varnish
  - Reverse Board (Uncoated)
  - Gloss Lamination
  - Matt Lamination
  - Anti-Scratch Matt Lamination
  - Special Lamination (i.e. Holographic Lamination)

Please click [here](#) for useful information on the best way to set up and supply your artwork.  
 For any further questions please email our design team [here](#).

Please ask your account manager if you would like to change the stock and/or finish, as prices may vary.  
 \* Please note, not all card stocks are available on all templates. Please check with your sales contact.