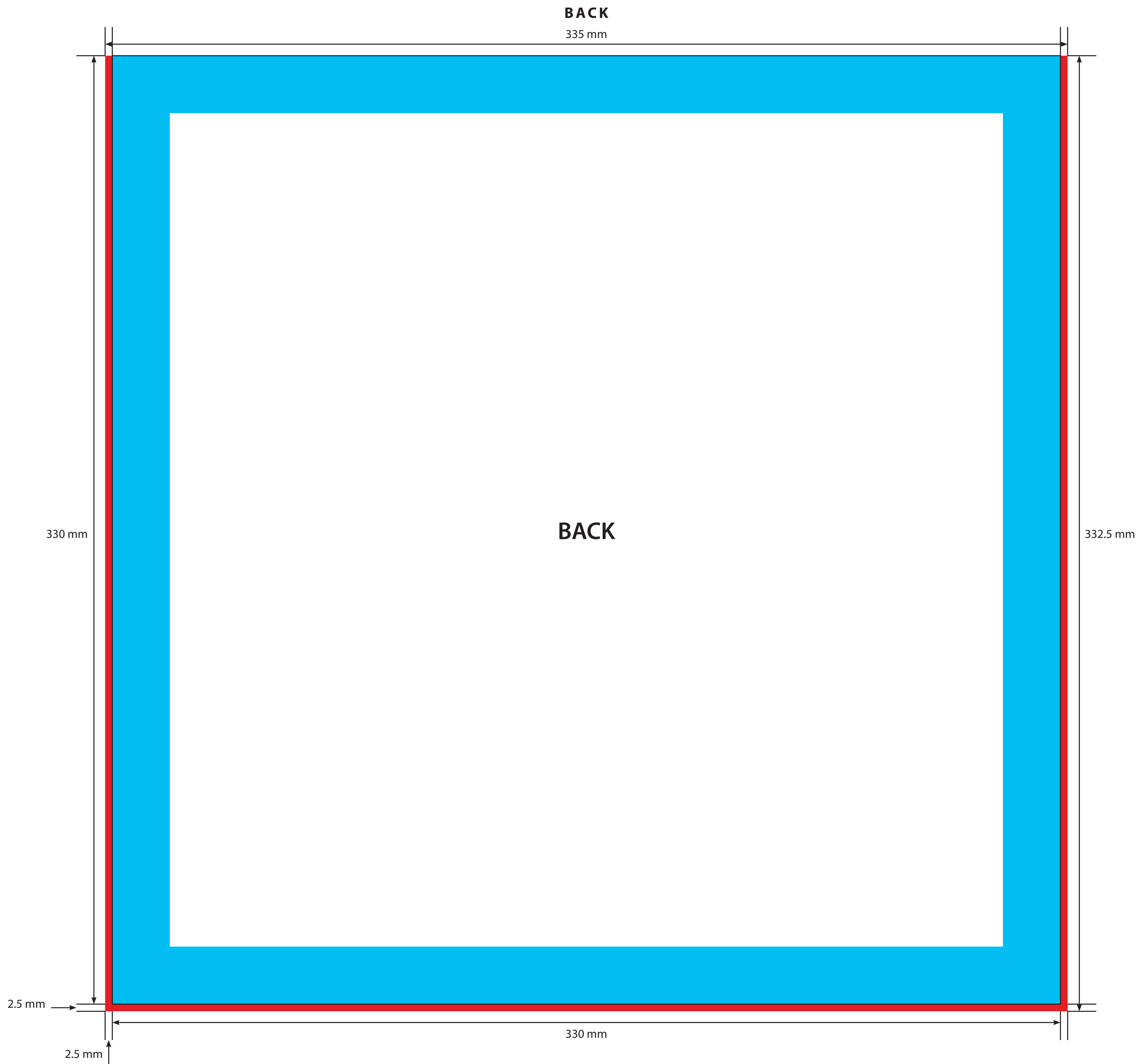


KEY

- Trim Line
- - - - - Fold Line
- 20mm Safety Area - *Important text and logos should not be in this area.*
- 2.5mm Required Weld Area - *Background should extend to this line.*

Please click [here](#) for useful information on the best way to set up and supply your artwork.
For any further questions please email our design team [here](#).



KEY

- Trim Line
- - - - - Fold Line
- 20mm Safety Area - *Important text and logos should not be in this area.*
- 2.5mm Required Weld Area - *Background should extend to this line.*

Please click [here](#) for useful information on the best way to set up and supply your artwork.
For any further questions please email our design team [here](#).